

NATIONAL GENERAL ASSEMBLY 3

Belgian Medical Students Association



BeM 
  **SA**

LOCATION

Brussels



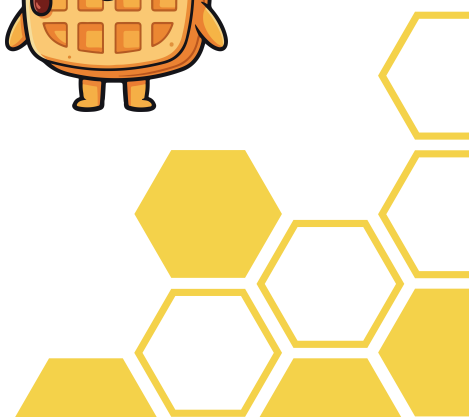
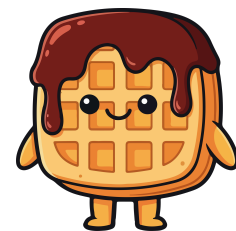
Brussels: The Heart of Europe

Brussels, the vibrant capital of Belgium, is a city where history and modernity blend seamlessly. Known for its stunning Grand Place, a UNESCO World Heritage site, Brussels boasts opulent guildhalls, the striking Town Hall, and the iconic **Manneken Pis**, all set in a lively atmosphere.

Beyond its historic core, Brussels is a hub of **European politics**, home to the European Parliament and numerous international institutions. Art and culture flourish here, from the surreal works of Magritte at the Magritte Museum to the dynamic street art celebrating Belgium's comic book heritage. The **Atomium**, a futuristic symbol of the 1958 World Expo, offers breathtaking views of the city.

No visit to Brussels is complete without indulging in its **world-famous gastronomy**. From crispy frites with an array of sauces to rich Belgian chocolate and perfectly crafted waffles, the city is a paradise for food lovers. Pair these delights with a locally brewed beer, and you'll experience the true flavors of Brussels.

With its cosmopolitan energy, deep-rooted history, and welcoming spirit, Brussels is a city that captivates and surprises at every turn.



CANDIDATURES

To apply for the upcoming BeMSA National Board, follow these steps:

1. **Submission of the candidature documents - deadline 13 April 23h59**

- a. **Motivational Letter** for the relevant position - max. 2 pages, in pdf format.
- b. **Curriculum Vitae** with relevant experience (BeMSA, other organisations, ...) - max. 2 pages, in pdf format.
- c. **Plan of Action** for the position in the upcoming term - max. 2 pages, in pdf format.

All three of these documents must be uploaded through the [Candidature Submission Form](#) for the candidature to be valid!

Please make sure to log in with your personal Google account (not your BeMSA account).

2. **Presentation of the candidature at NGA3 - 18 April**

- a. Prepare a 5 minute presentation to explain your motivation and plan of action.
- b. After the presentation, you will have 5 minutes to answer any questions from the audience.

If you are unable to attend the NGA, an online solution will be provided. However, please note that in-person presentations make it easier to get to know you as a candidate, and that attendance of NGAs is an important part of the national board position, so we highly encourage everyone to come.

3. **Election at the plenary of NGA3 - 18 April**

- a. The city representatives will vote on the submitted candidatures to elect the new BeMSA National Board.
- b. The results will be available immediately after the plenary.

In case of questions don't hesitate to reach out to president@bemsabe.be, vicepresident@bemsabe.be or supervisingcounsel@bemsabe.be.

SOCIAL PROGRAM



Once again, we have an exciting social program planned for you! Whether you're joining to unwind after a full day of sessions, to meet new people, or simply to have fun with fellow BeMSA members, our social program is all about connection, laughter, and shared memories.

Saturday Evening: social program

After a full day of sessions, candidatures and elections, we will unwind with some physical activity. However it will be with a BeMSA twist, we will do some parasports!

Be ready increase your knowledge but also understanding of parasports. These parasports will include sitting volleyball and Football 5-a-side

This will take place in the sportshall present on campus, so it's just a short walk!

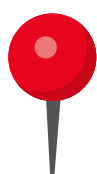


Disclaimer: It is allowed to bring alcoholic beverages to the NGA, however the consumption must always be in line with the bylaws and Code of Conduct. Drinking and smoking during important meetings is forbidden.

GENERAL SCHEDULE

Saturday, 18 April 2026

8:30	Breakfast
9:00	Opening Ceremony
9:15	Sessions 1
10:30	<i>Break</i>
10:45	Candidatures
12:30	<i>Lunch + LC hour</i>
13:30	Sessions 2
14:45	<i>Buffer</i>
15:15	Plenary
17:30	Closing
18:00	Social Program (parasport)



The sessions (& SP) will take place at UCLouvain:
Rue Martin V 57/85, 1200 Woluwe-Saint-Lambert

SESSIONS AGENDAS



Presidents' Sessions

Saturday

9:15	Tea time & BCP discussion
13:30	Candidature discussion

Descriptions

Tea time: Here we will talk with each other about how it has been going in your LC and we will update you on national events.

BCP discussion: We will discuss the submitted Bylaw Change Proposals (BCPs). These will be voted on on the same day at the plenary.

Candidature discussion: We will discuss the candidatures that we have seen that morning. Here we will discuss what we want the future board of BeMSA to look like!

SESSIONS AGENDAS



SCOPH Sessions

Saturday

9:15	Review & Future Directions
13:30	/

Descriptions

Review & Future Directions: During this session we will look back at the past SCOPH activities, not only discussing them and learning from them. But we will also look to where SCOPH will be going next year.

SESSIONS AGENDAS



SCORP Sessions

Saturday

9:15	/
13:30	SCORPA Jeopardy

Descriptions

SCORPA Jeopardy: Get ready for the one and only SCORPA Jeopardy Game! In this game we will tackle different SCORP & SCORA topics in an interactive manner. Test your knowledge and learn new things about important issues. And who knows, maybe the winners will not go home empty handed...

SESSIONS AGENDAS



SCORA Sessions

Saturday

9:15	/
13:30	SCORPA Jeopardy

Descriptions

SCORPA Jeopardy: Get ready for the one and only SCORPA Jeopardy Game! In this game we will tackle different SCORP & SCORA topics in an interactive manner. Test your knowledge and learn new things about important issues. And who knows, maybe the winners will not go home empty handed...

SESSIONS AGENDAS



SCOME Sessions

Saturday

9:15	Care for the Caregivers
13:30	Make it Make Sense

Descriptions

Make it Make Sense: Fun interactive game where healthcare students practice explaining diseases, medications, and procedures clearly and creatively to different audiences to improving communication, adaptability, and health literacy skills.

Care for the Caregivers: A hands-on session where healthcare students explore ways to manage stress, build resilience, and take care of themselves while caring for others (fun exercises, reflection, and group sharing)

SESSIONS AGENDAS



Exchanges Sessions

Saturday

9:15	CA & CC, UAT & EAs, Accommodation
13:30	NSP & LSP, Academic Recognition

Descriptions

CA & CC, UAT & EAs, Accommodation: Explanation about how to fill in the CA, and how the OGs should fill in their CC. We will also discuss the Upon Arrival Training and Educational Activities that are mandatory in every LC. We will also go over the accommodation and pocket money details

NSP & LSP, Academic Recognition: Be ready to get creative and help organise the National Social Program to let our ICs see the best of Belgium. Of course next to the National one, the Local Social Program is also important! And we will go over academic recognition of the exchanges in each LC.

SESSIONS AGENDAS



LC management Sessions

Saturday

9:15	Respect, Boundaries & Action!
13:30	/

Descriptions

Respect, Boundaries & Action: In any group, situations may arise where behaviour feels uncomfortable, inappropriate, or unclear. This session provides participants with the tools to navigate these moments with confidence. We will discuss how to recognise these situations, set and respect personal and collective boundaries, and respond in a constructive and proportionate way. By working through real-life scenarios, participants will gain practical strategies to act responsibly, support others, and contribute to a respectful group culture.

SESSIONS AGENDAS

BeMo
• • SA

CB Sessions

Saturday

9:15	/
13:30	Minigames

Descriptions

Minigames: In this session you will go through several rounds of small 'minigames' of 10-15min. Through these games you will learn and experience communication, teamwork, solving situations, ... The perfect combination of fun and educational!

SESSIONS OVERVIEW

SC

1

2

SCOME

Care for the Caregivers

Make It Make sense

SCOPH

Review & Future Directions

SCORA

SCORPA Jeopardy

SCORP

SCORPA Jeopardy

LC Mx

Respect, Boundaries & Action

Exchange

CA & CC, UAT & EAs,
Accommodation

NSP & LSP, Academic Recognition

President

Tea time & BCP discussion

Candidature discussion

CB

Minigames

TRANSPORTATION

By Train, By Car

Train

Students leaving from Antwerpen, Gent, Kortrijk, Hasselt, Leuven, Liège, Mons & Namur can take a **direct train** to Brussels-Central, from where you can take **Metro 1** to get to the faculty.



Car

If you're coming by car, you can park on the campus. The address for it is 84 avenue de la Palestre Woluwe-Saint-Lambert. However we only have access to the 'Sud' parking, so make sure to park at the right one.

We will send the information on how to access the parking in an email before the NGA.

MENU

BeM⁺
•• SA

Saturday, 22 April 2026

Breakfast: pastries, bread

Lunch: hot dogs

Dinner will **not** be **provided**, however there are several dining options on/around the campus.

There will be snacks provided throughout the weekend: cake, fruit, cookies, ...

Drinks will also be provided, however we will not provide cups!



Due to unforeseen circumstances, there may be last-minute changes to this menu. However, everyone's food restrictions are always taken into account.

NATIONAL BOARD

BeM^o
• • SA



President
Mathias Broeckx



Vice President
Isaak Van der Hoeven



Head of PR
Juta Briers



Treasurer
Anneleen Brichau



Secretary
Louis Dewil



NORA
Narjisse Bouzazah



NORP
Gaëlle Fretin



NPO
Kwinten Vandebergen

NATIONAL BOARD

BeM^o
• • SA



NEO
Sherin Ramazani



NORE
Robbe Coeckelberghs



NORE
Guinevere Savat



Mascotte
BeeMSA



NOME
Alicia Kuz



NOCB
Carsten Vermeer



Supervising Council
Anna Lena Niessen



Supervising Council
Corneel Claeys



Supervising Council
Jessie Nantongo